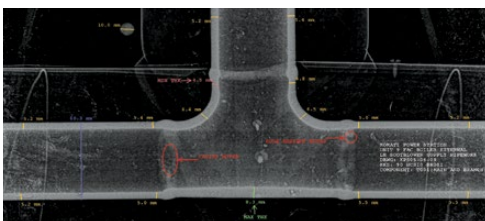


## Defining Computed Radiography

Computed Radiography is a technique that captures a radiographic image using storage phosphors for future scanning and display.



### PRINCIPLES OF OPERATION:

- Use of Existing Sources – same as film (X-ray, Ir, Co, Se, etc...)
- Use of Existing Lead Screens and Cassettes in certain applications
- Usable at all practical Energy Levels 10kV – 15MeV
- Images can be Captured and Read Quickly and easily, both in the field and in the lab.
- If need be, image densities and clarity can be manipulated, stored and shared electronically
- Can scan multiple plates simultaneously
- Proven phosphor technology provides sufficient details for many NDT Applications including: Erosion and corrosion, Pipeline inspection, Welded fabrication and Ordnance

### A digital replacement for X-ray film, film processors and light-box viewers:

X-Ray tube, Source → X-Ray tube, Source  
 Film → Images Plate  
 Cassette/Screens → Cassette/Screens  
 Processor → CR reader  
 Light-box viewer → High-resolution monitor

- A variety of image filters, including the EDGE filter, allows displayed images to be enhanced digitally to aid with interpretation
- Split-screen capability to compare multiple images easily
- Simple measurement tool for overall dimensions, defect size, wall thickness, etc.
- Batch file export function
- Thumbnail image retrieval system for quick selection
- Zoom, magnify, rotate and pan functions for maximum viewing flexibility
- Auto file save option allows users to automatically scan and restore images quickly, local metadata store allows for keyword searching
- Adjustable laser power and PMT gain through the software (H PX-1), for optimizing image capture resolution and signal to noise

**DRT is hard at work in the world today including: Oil and Gas, Power and Utilities, Infrastructure & Building/Mining, Transport Equipment and Machinery**



# STANLEY®

Oil & Gas



## CONTACT DETAILS

### Head Office

27 Brunton Circle, Founders View

Modderfontein

1609

South Africa

Tel: (011) 453 4115

Fax: (011) 453 0738

e-mail: [enquiriesmea@sbdinc.com](mailto:enquiriesmea@sbdinc.com)

### Mpumalanga

Tel: (017) 631 5338

Fax: (017) 631 5227

### Western Cape

Tel: (021) 552 9807

Fax: (021) 552 9808

### Lephalale

Tel: (011) 453 4115

Fax: (011) 453 0738

### Gauteng

Tel: (011) 453 4115

Fax: (011) 453 0738

### Freestate

Tel: (016) 971 2714

Fax: (016) 971 2139

### Kwazulu-Natal

Tel: (035) 797 5389

Fax: (035) 797 5389

## MIDDLE EAST DETAILS

### PIH Services ME Ltd / Stanley Inspection (Middle East)

406 - 407, Sobha Ivory 1

Business Bay

Dubai, U.A.E

Phone: +971 4 818 0500

Email: [sales@pihme.com](mailto:sales@pihme.com)

Please contact the following for all enquiries:

Tel: (011) 453 4115

Fax: (011) 453 0738

e-mail: [enquiriesmea@sbdinc.com](mailto:enquiriesmea@sbdinc.com)